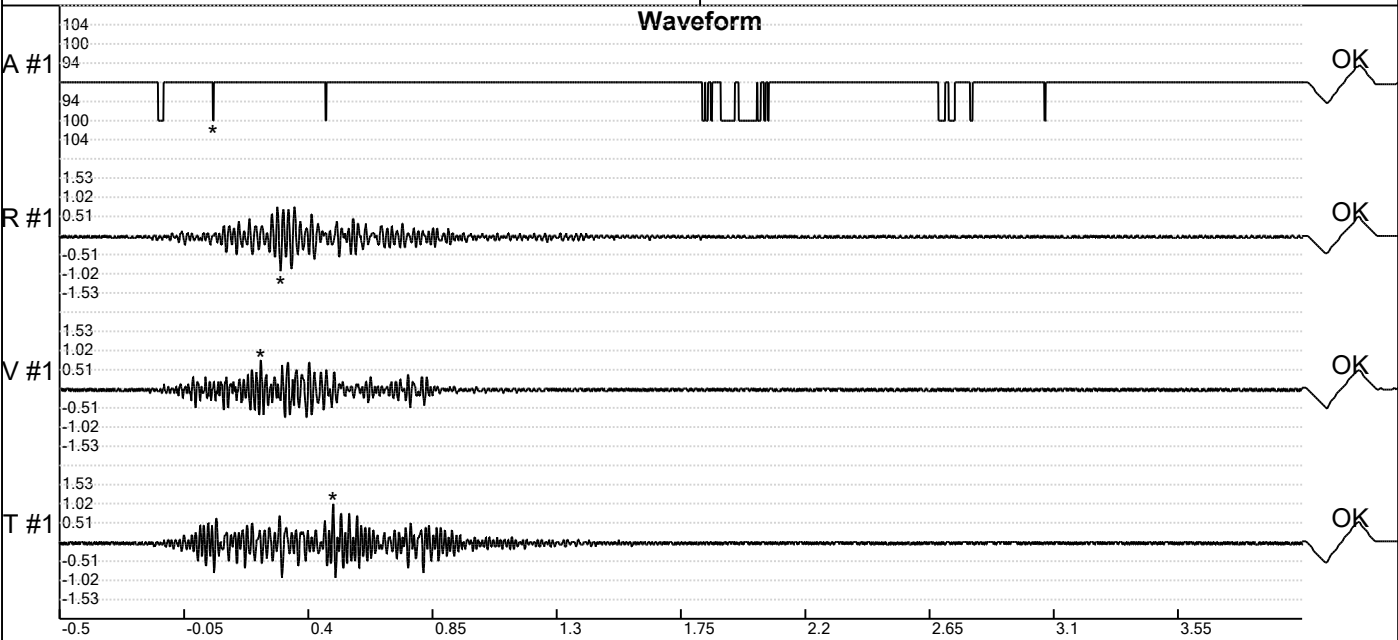


Carrière de BRS
 Élargissement virage rampe -5
 Tir du 24/02/2020
 Sismographe placé au
 261 Halleux
 4710 Comblain-au-Pont

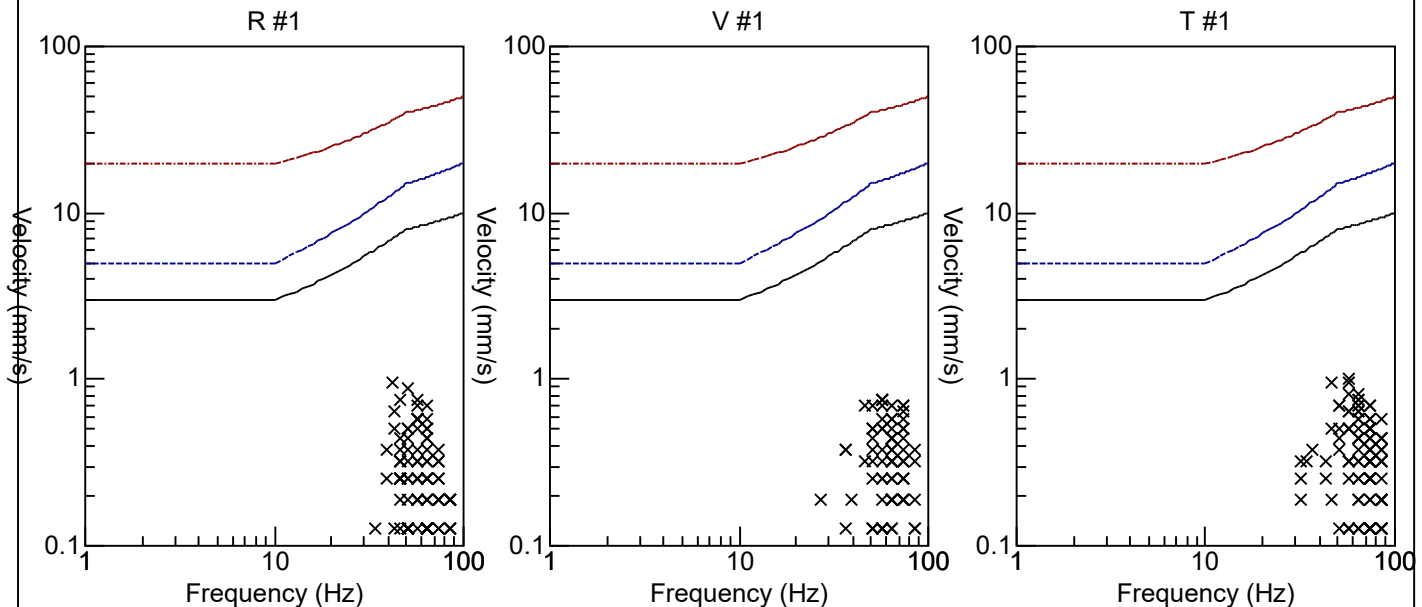
Record: 1789202002241600216.dtb
 Number: 216
 Seismograph: Mini-Seis 1789
 Type of Record: Waveform
 Date: 24-02-20 16:00:00
 Duration: 4.50 Seconds
 Sample Rate: 1024
 Pre-Trigger: 0.5 Seconds
 Seismic Trigger: 0.508 mm/s
 Acoustic Trigger: 142.1 dB
 Seismic Gain: 63.5
 Acoustic Gain: 141.9 dB
 Voltage: 6.7

Peaks and Frequencies
PPV Maximum (Geo #1): 1.02 mm/s
 Acoustic #1: 100.0 dB @ 0.0 Hz (0.0546875 s)
 Radial #1: 0.953 mm/s @ 42.6 Hz (0.2998047 s)
 Vertical #1: 0.762 mm/s @ 56.8 Hz (0.2275391 s)
 Transverse #1: 1.02 mm/s @ 56.8 Hz (0.4902344 s)

Graph Information
 Time Range: -0.5 s to 4 s, Intervals: 0.4500 Seconds



Velocity vs. Frequency (DIN 4150-3 Tab 1)

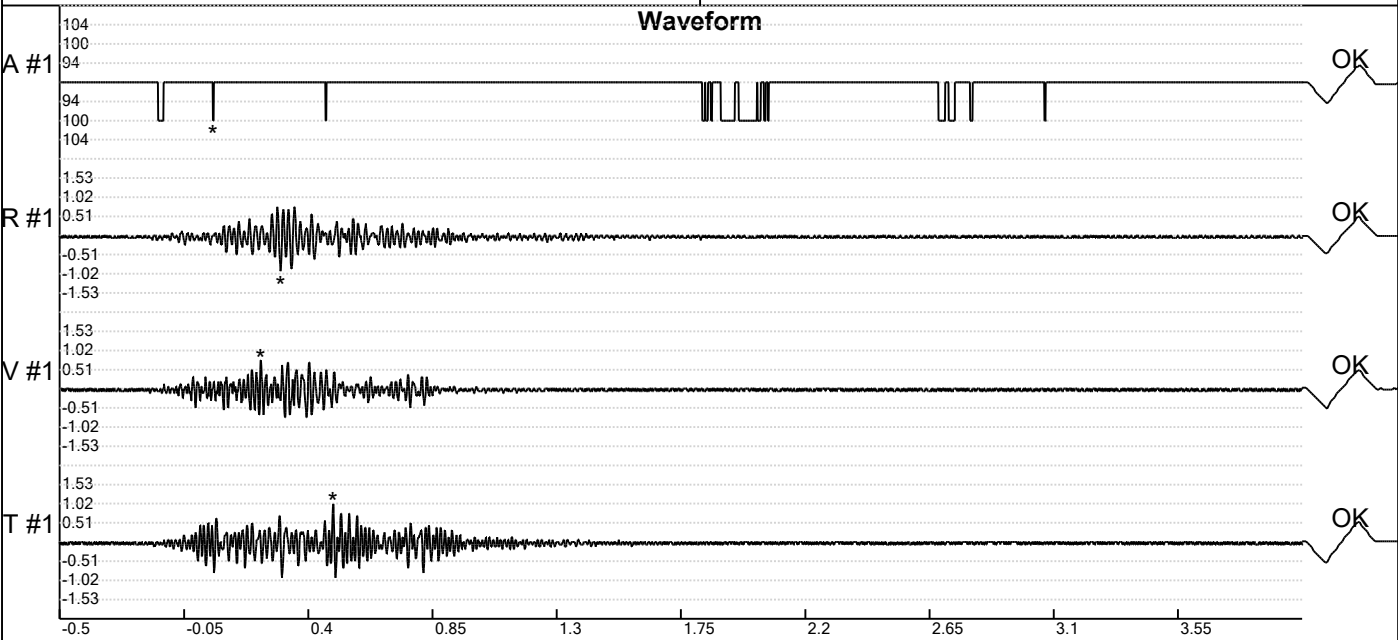


Carrière de BRS
 Élargissement virage rampe -5
 Tir du 24/02/2020
 Sismographe placé au
 261 Halleux
 4710 Comblain-au-Pont

Record: 1789202002241600216.dtb
 Number: 216
 Seismograph: Mini-Seis 1789
 Type of Record: Waveform
 Date: 24-02-20 16:00:00
 Duration: 4.50 Seconds
 Sample Rate: 1024
 Pre-Trigger: 0.5 Seconds
 Seismic Trigger: 0.508 mm/s
 Acoustic Trigger: 142.1 dB
 Seismic Gain: 63.5
 Acoustic Gain: 141.9 dB
 Voltage: 6.7

Peaks and Frequencies
PPV Maximum (Geo #1): 1.02 mm/s
 Acoustic #1: 100.0 dB @ 0.0 Hz (0.0546875 s)
 Radial #1: 0.953 mm/s @ 42.6 Hz (0.2998047 s)
 Vertical #1: 0.762 mm/s @ 56.8 Hz (0.2275391 s)
 Transverse #1: 1.02 mm/s @ 56.8 Hz (0.4902344 s)

Graph Information
 Time Range: -0.5 s to 4 s, Intervals: 0.4500 Seconds



Fast Fourier Transform (Amplitude Spectrum)

